

LAMINATES



Apply on:

- Worksurfaces
- Bookcases
- Pedestals
- Matis tiles
- Link panels

Please check availability and delivery time with your dealer.

Additional hardware colors available for an extended lead time and additional cost.

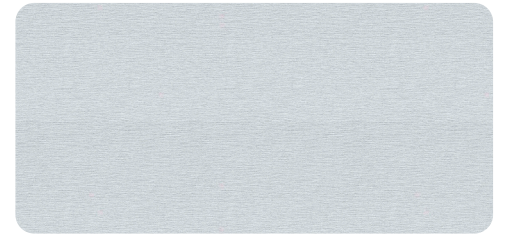
For the full design, visit our link:
<https://tremainusa.com/resources/>



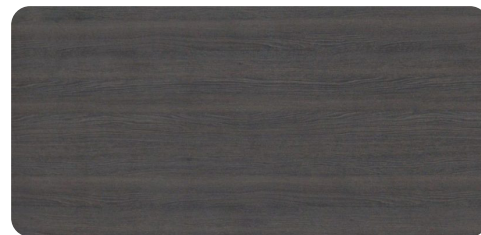
• Maple 7902-58



• Cioccolata 7927-58



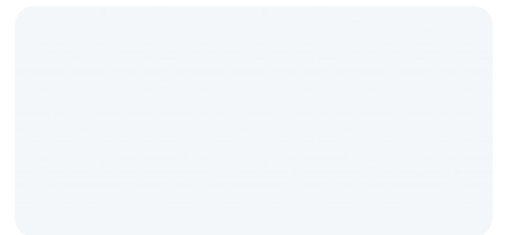
• Titan 3737-58



• Carvalho Cinza 7935



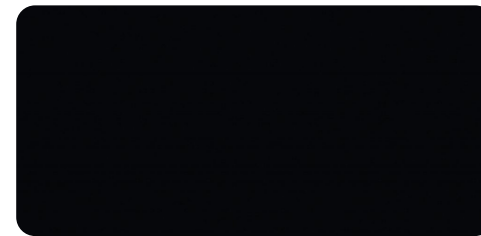
• White Ash 8841-58



• Ultra White 0100-58

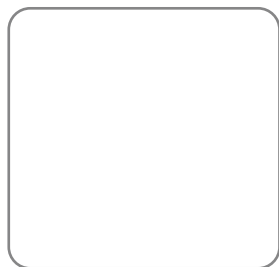


• Ultra Grey 0055-58



• Ultra Black 0015-58

HARDWARE



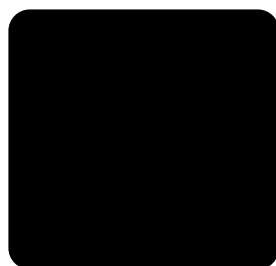
• White



• Silver



• Sterling

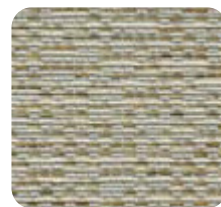


• Black

FABRICS



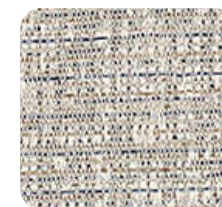
• Banter



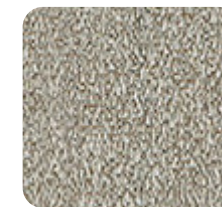
• Jagon



• Axis



• Unison



• Cusp



• Hinge



• Tier



• Alliance



• Coalition



• Collaborate



• Collective

TREMAIN®



WARRANTY

Limited lifetime warranty for all TREMAIN branded products (except as noted below) TREMAIN warranty extends only to original purchaser acquiring new products.

TREMAIN warrants its products to be free of defects in any material and workmanship found during normal usage, from the date of purchase, when the products are installed and used in accordance with the TREMAIN installation and specification instructions.



- 5 years: Fabrics and fabric covered surfaces, electrical components and lighting fixtures, vertical cable carrier, and any other lighting power supplies, etc.
- 3 years: Laminates, surface finishes, other textiles, vinyl and other covering materials (for workmanship only).
- 1 year: Any nonstandard product such as but not limited to keyboard mechanisms, flat panel monitor arms, casters, glides and slides.

Exceptions:

- Natural variations in wood grain, figures or the presence of character marks.
- Matching of colors, grains, textures.
- Changes in surface's finishes due to aging or exposure to light.
- Damage, marking or blemish of surfaces due to contact with rubber or similar compounds.
- Damage from prolonged exposure to fluids or sun
- Changes in fabric or surfaces due to climate's temperature or storage
- Damage caused by misuse or improper care
- Tremain does not offer warranty on COM (customers own material).

SPECIFICATIONS

Grade PP laminates not available on Link panels and Matis Tiles

Images may display differently on screen, please use samples for accuracy.

Some finishes may have a longer lead-time.

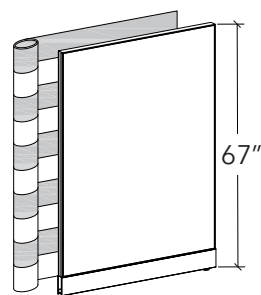
Standard fabric application for panels 67" height and lower is horizontal (see img. 1.1).

85" Height and floor to ceiling panels are only available in vertical application, please specify direction when ordering 67" height and below to match 85" height (see img 1.2). May incur in extra cost.

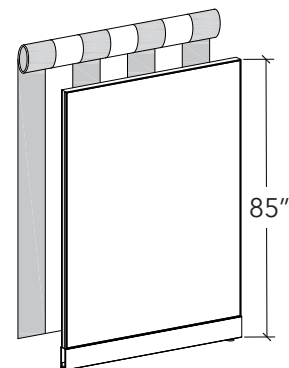
Additional fabrics and laminates may be available with an upcharge.

Work surfaces with wood grain design laminates are applied horizontally (see img 1.3).

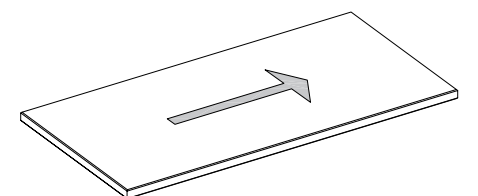
*Colors for adjustable height bases only available in silver.



Img. 1.1



Img. 1.2



Img. 1.3