



 **TREMAIN®**



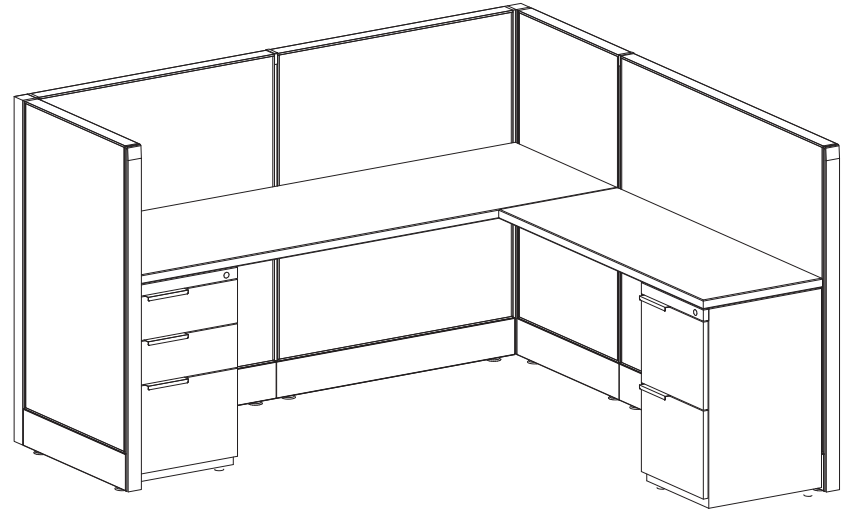
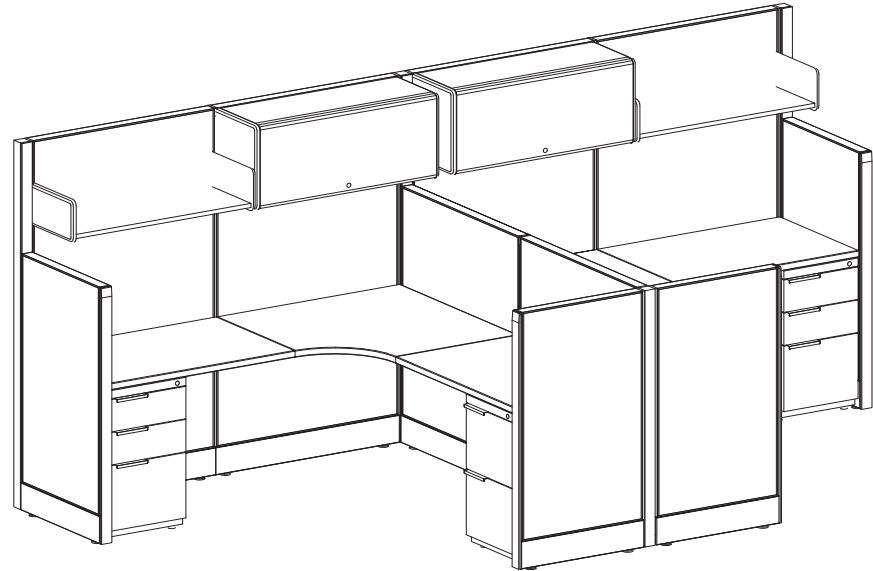
Tremain's Blaze fast program was created for customers that need product FAST!

BLAZE FAST

10 Day Quick Ship Program

The Blaze program, by Tremain, is for customers that need product at Blaze-ing speed and also a Blaze-ing hot price!

Tremain is using the 2" Link panel product for this program. The Blaze program is very basic and has limited fabric, laminate and paint options for the price conscience customer that is flexible about colors and design.



OVERHEADS

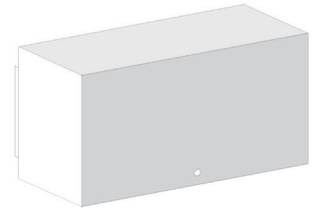
Low / Shelf Squared

24 36 48
• • •



Painted metal
Flipper Door Unit

36 48
Fabric • •



WORK SURFACES

Rectangular

24 36 48 60 72
18 • • •
24 • • • •



Corner

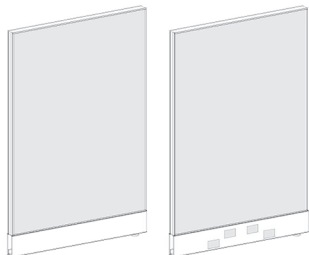
24 36-36
•



PANELS

Fabric

47 67
24 • •
36 • •
48 • •



STORAGE

Laminate pedestal 18" deep

Support

BBF
FF

•
•



WORKTOOLS



Task Light

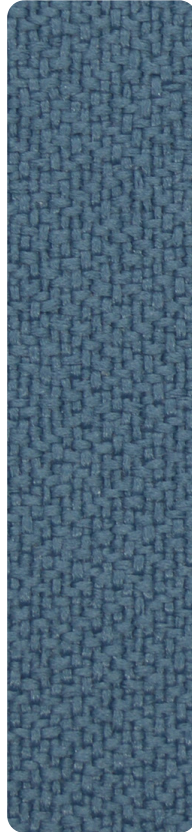
36
•



Tackboard

36 48
• •

FABRICS



● Zafiro

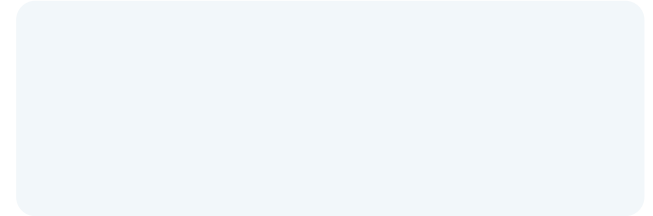


● Angora



● Perla

LAMINATES



● Frosty



● Natural Grey

HARDWARE



● Silver

Laredo, TX 78041-5773
T. (855) 312 7770

WWW.TREMAINUSA.COM

Images may display differently on screen, use physical samples for accuracy.

Please check availability and delivery time with your dealer.