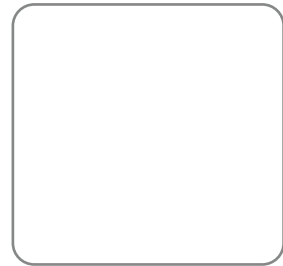
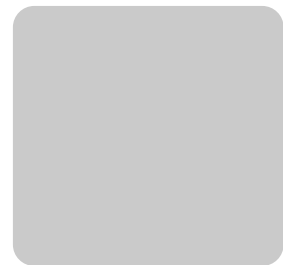


TRIM PAINT



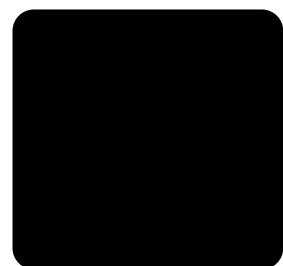
• White



• Silver



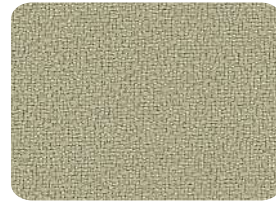
• Sterling



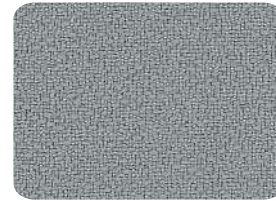
• Black

FABRIC GRADE PP

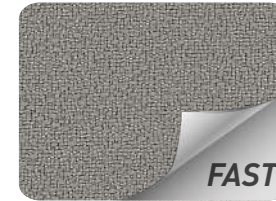
FRAMEWORK 2762



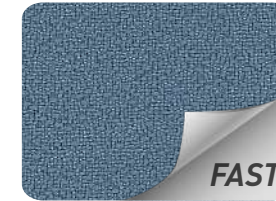
• Sandy Pebble 2554



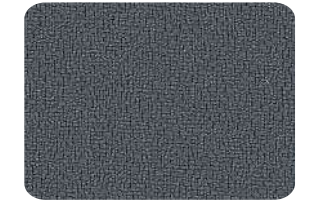
• Gray Blue 2553



• Dove Gray 2689

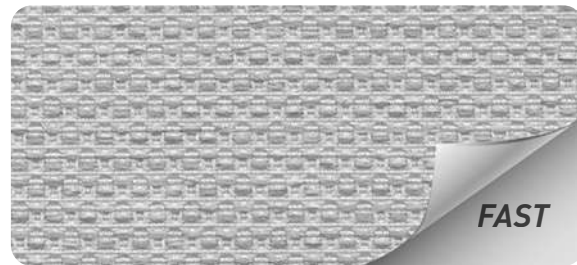


• Blue Smooth 2519



• Elephant 2690

CHASE 2138



• Shadow 1246



• Coin 1243



• Ecru 1241



• Mushroom 1245



• Pumice 1248

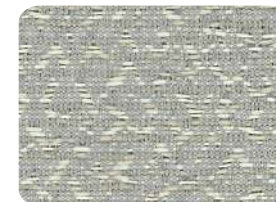
MINGLE 2527



• Whestberry 041



• Biscuit 090



• Winter 070

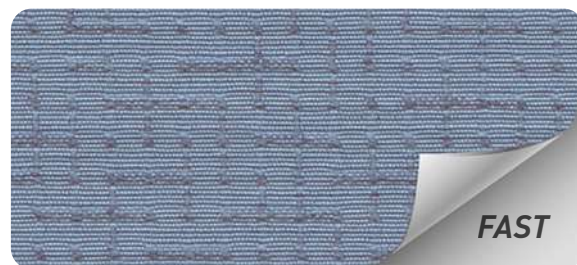


• Crystal 060

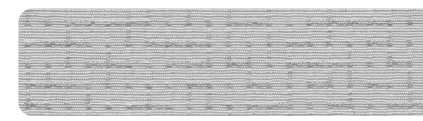


• Carbon 010

AMAZE 2139



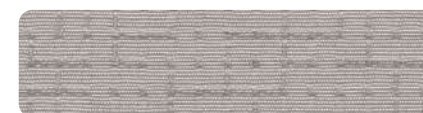
• Sky 1268



• Platinum 1260



• Bone 1262



• Morel 1264



• Steel 1266

ESSENCE 4873



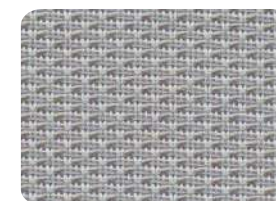
• Cream 2631



• Tobacco 2635



• Ash 2634



• Heather 2633



• Charcoal Melange

TREMAIN®



WARRANTY

Limited lifetime warranty for all TREMAIN branded products (except as noted below) TREMAIN warranty extends only to original purchaser acquiring new products the company to act as resellers of its products.

TREMAIN warrants its products to be free of defects in any material and workmanship found during normal usage, from the date of purchase, when the products are installed and used in accordance with the TREMAIN installation and specification instructions.



- 5 years: Fabrics and fabric covered surfaces, electrical components and lighting fixtures, vertical cable carrier, and any other lighting power supplies, etc.
- 3 years: Laminates, surface finishes, other textiles, vinyl and other covering materials (for workmanship only).
- 1 year: Any nonstandard product such as but not limited to keyboard mechanisms, flat panel monitor arms, casters, glides and slides.

Exceptions:

- Natural variations in wood grain, figures or the presence of character marks.
- Matching of colors, grains, textures.
- Changes in surface's finishes due to aging or exposure to light.
- Damage, marking or blemish of surfaces due to contact with rubber or similar compounds.
- Damage from prolonged exposure to fluids or sun
- Changes in fabric or surfaces due to climate's temperature or storage
- Damage caused by misuse or improper care
- Tremain does not offer warranty on COM (customers own material).

SPECIFICATIONS

Lead time for Grade BL and PP finishes standard.

Lead time for Grade A and B finishes extended.

Only use grade BL laminates on: tables, work surfaces and case goods.

Images may display differently on screen, please use samples for accuracy.

Some finishes may have a longer lead-time.

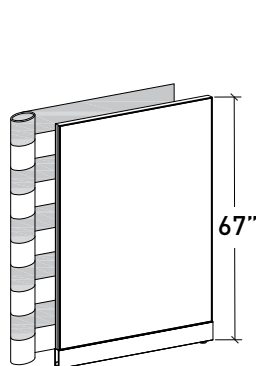
Standard fabric application for panels 67" height and lower is horizontal (see img. 1.1).

85" Height and floor to ceiling panels are only available in vertical application, please specify direction when ordering 67" height and below to match 85" height (see img 1.2). May incur in extra cost.

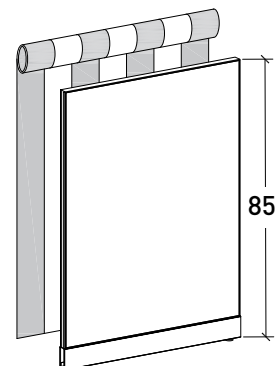
Additional fabrics and laminates may be available with an upcharge.

Work surfaces with wood grain design laminates are applied horizontally (see img 1.3).

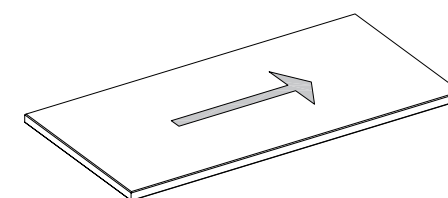
*Colors for adjustable height bases only available in white, black and silver.



Img. 1.1



Img. 1.2



Img. 1.3