



INNOVATION IN
WORKING ENVIRONMENTS





Link®

Monolithic Panel System



This line is the upgraded and updated version of our system of monolithic panels.

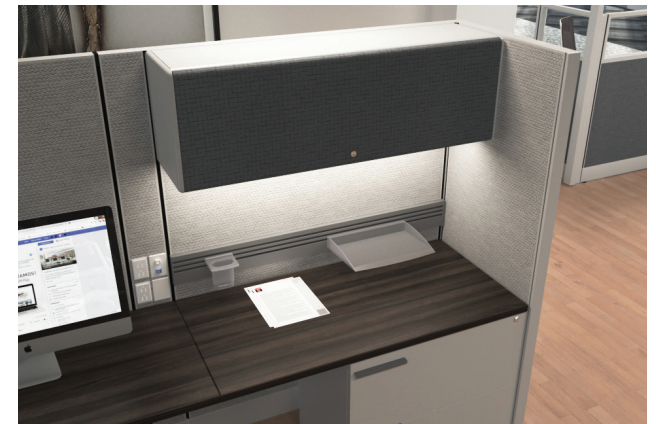
Among its outstanding features, you can find the integration of a metal frame, floor to ceiling design up to 110 inches, sliding

doors, power at worksurface height and a renewed storage system to complement its contemporary design.

Link a modern workspace at your reach.



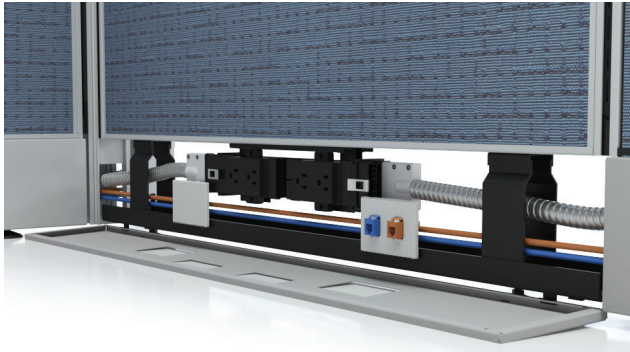
Support BBF Pedestal



Tasklight / Toolbar



Floor to Ceiling Panel



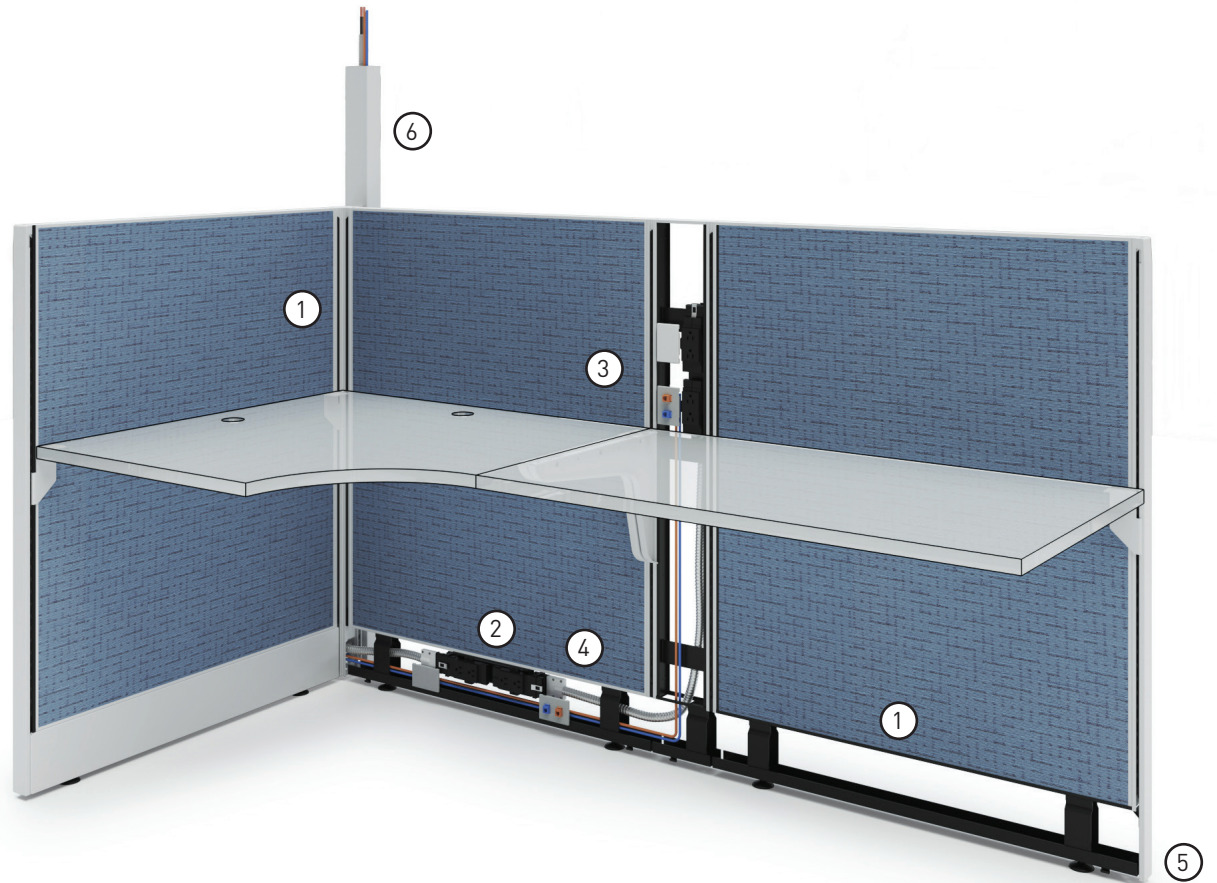
Power Harness



Metal Raceway Covers



Flush Metal Raceway



① Power and data can be routed horizontally through the raceway and vertically through the power pole.

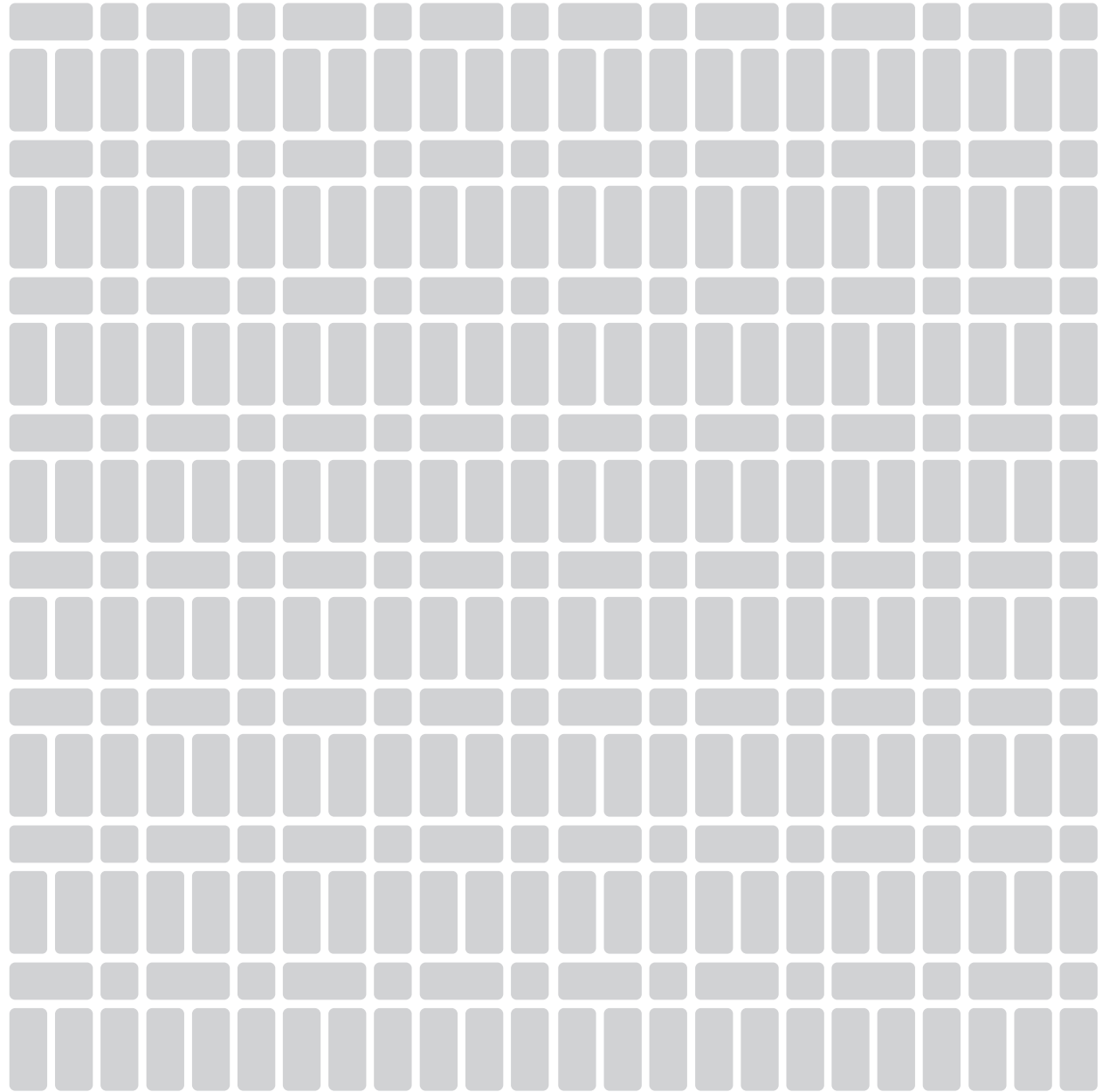
② Power harnesses are modular, non handed, and install easily. Two modular connection points at the end of each power harness allow branching of power. They allow two duplex receptacles per side.

③ Power, voice and data can also be installed above the working surface.

④ Jack housing for voice and data are available in two locations at each power and data panels.

⑤ 75" long feeds available for floor connection.

⑥ 165" long ceiling feeds available for ceiling connections.



Privada El Encino 730,
Santo Domingo, C.P. 66444
San Nicolás de los Garza, N.L.
T (81) 8331 6507

1209 S 10th St. Ste. A PMB 240
McAllen, Tx 78501 USA
T (855) 312 7770

WWW.TREMAIN.COM.MX